

### "Eye Right Wide"



#### Description

This blend shape keeps right eye wide and at that time "Eye Right Blink" value is 0.

### "Eye Right In"



#### Description

This blendShape influences the muscles around the right eye, moving these muscles further leftward with a higher value.

### "Eye Right Blink"



#### Description

This blend shape influences blinking of the right eye. When this value goes higher, right eye approaches close.

### "Eye Right Out"



#### Description

This blendShape influences the muscles around the right eye, moving these muscles further rightward with a higher value.

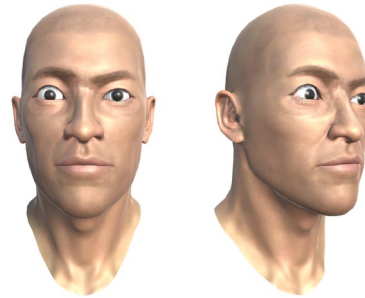
### "Eye Right Squeeze"



#### Description

The blend shape closes eye tightly and at that time "Eye Right Blink" value is 1.

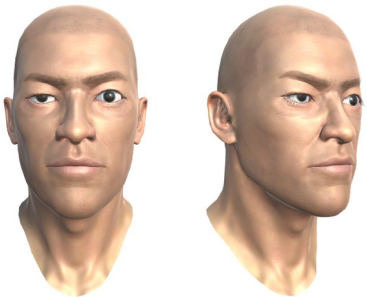
### "Eye Right Up"



#### Description

This blendShape influences the muscles around the right eye, moving these muscles further upward with a higher value.

### "Eye Right Down"



#### Description

This blendShape influences the muscles around the right eye, moving these muscles further downward with a higher value.

### "Jaw Right"



**Description**  
This blend shape moves the jaw further rightward with a higher value.

### "Mouth Upper Right"



**Description**  
This blend shape moves your upper lip rightward.

### "Jaw Forward"



**Description**  
This blend shape moves the jaw forward with a higher value.

### "Mouth Lower Right"



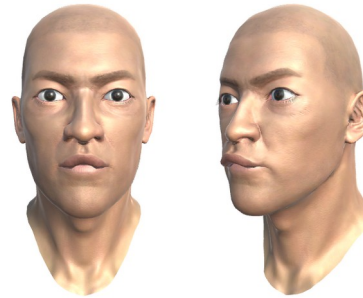
**Description**  
This blend shape moves your lower lip rightward.

### "Jaw Open"



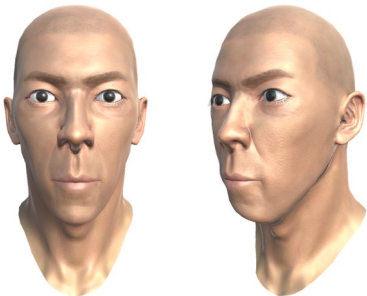
**Description**  
This blend shape opens the mouth further with a higher value.

### "Mouth Upper Overturn"



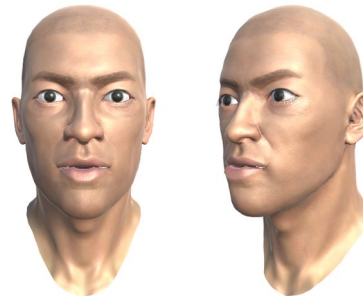
**Description**  
This blend shape pouts your upper lip. Can be used with "Mouth Upper Up Right" and "Mouth Upper Up Left" to complete upper O mouth shape.

### "Mouth Ape Shape"



**Description**  
This blend shape stretches the jaw further with a higher value.

### "Mouth Lower Overturn"



**Description**  
This blend shape pouts your lower lip. Can be used with "Mouth Upper Up Right" and "Mouth Lower Down Right" to complete upper O mouth shape.

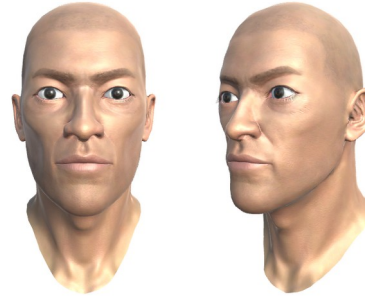
### "Mouth Pout"



#### Description

This blend shape allows the lips to pout more with a higher value.

### "Cheek Suck"



#### Description

This blend shape sucks in the cheeks on both sides further with a higher value.

### "Mouth Smile Right"



#### Description

This blend shape raises the right side of the mouth further with a higher value.

### "Mouth Upper Up Right"



#### Description

This blend shape raises the right upper lip further with a higher value.

### "Mouth Sad Right"



#### Description

This blend shape lowers the right side of the mouth further with a higher value.

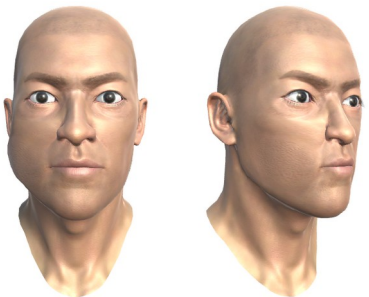
### "Mouth Lower Down Right"



#### Description

This blend shape lowers the right lower lip further with a higher value.

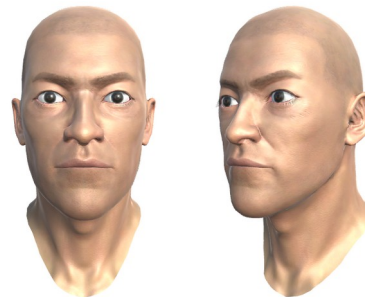
### "Cheek Puff Right"



#### Description

This blend shape puffs up the right side of the cheek further with a higher value.

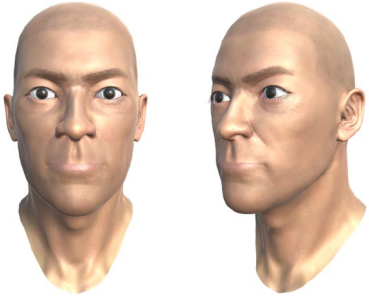
### "Mouth Lower Inside"



#### Description

This blend shape rolls in the lower lip further with a higher value.

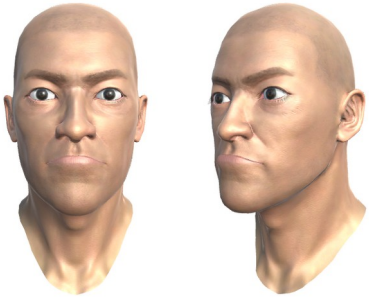
### "Mouth Upper Inside"



#### Description

This blend shape rolls in the upper lip further with a higher value.

### "Mouth Lower Overlay"



#### Description

This blend shape stretches the lower lip further and lays it on the upper lip further with a higher value.

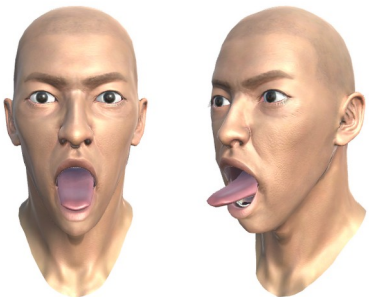
### "Tongue Long Step 1"



#### Description

This blend shape sticks the tongue out slightly. In step 1 of extending the tongue, the main action of the tongue is to lift up, and the elongated length only extends to a little bit beyond the teeth.

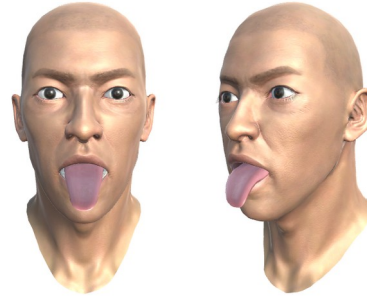
### "Tongue Long Step 2"



#### Description

This blend shape sticks the tongue out extremely. Continuing the step 1, it extends the tongue to the longest.

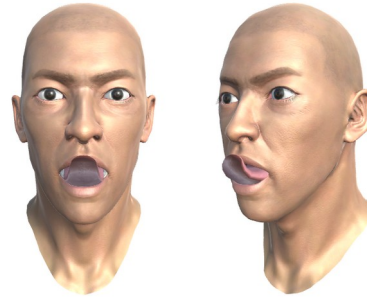
### "Tongue Down"



#### Description

This blend shape sticks the tongue out and down extremely. This example contains ("Tongue Down" "Tongue Long Step 1" + "Tongue Long Step 2").

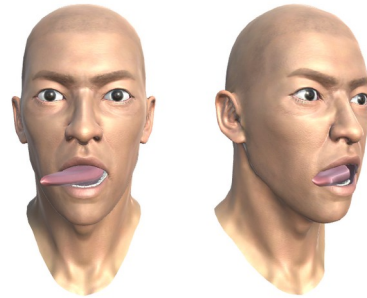
### "Tongue Up"



#### Description

This blend shape sticks the tongue out and up extremely. This example contains ("Tongue Up" "Tongue Long Step 1" + "Tongue Long Step 2").

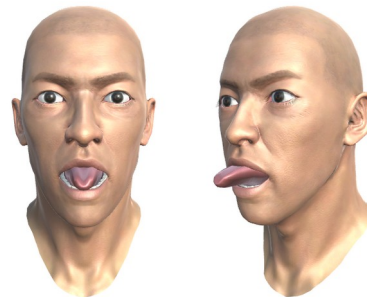
### "Tongue Right"



#### Description

This blend shape sticks the tongue out and right extremely. This example contains ("Tongue Right" "Tongue Long Step 1" + "Tongue Long Step 2").

### "Tongue Roll"



#### Description

This blend shape sticks the tongue out with roll type. This example contains ("Tongue Roll" "Tongue Long Step 1" + "Tongue Long Step 2").

### "Tongue Morph Up Right"



#### Description

This blend shape doesn't make sense. When both the right and up blend shapes appear at the same time, the tongue will be deformed. ("Tongue Right"  
"Tongue Up" + "Tongue Long Step 1"  
"Tongue Long Step 2")

### "Tongue Morph Down Right"



#### Description

This blend shape doesn't make sense. When both the right and down blend shapes appear at the same time, the tongue will be deformed. ("Tongue Right"  
"Tongue Down" + "Tongue Long Step 1"  
"Tongue Long Step 2")



#### Description

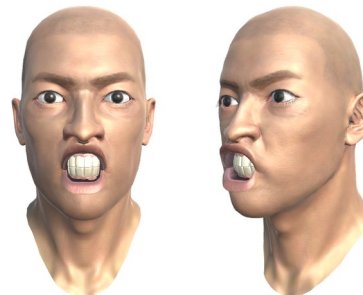
This blend shape fixes the deformation illustrated above. ("Tongue Right"  
"Tongue Up" + "Tongue Long Step 1"  
"Tongue Long Step 2" + "Tongue Morph Up Right")



#### Description

This blend shape fixes the deformation illustrated above. ("Tongue Right"  
"Tongue Down" + "Tongue Long Step 1"  
"Tongue Long Step 2" + "Tongue Morph Down Right")

### O shape



#### Description

The entire O-shaped mouth is formed by the combination of 6 blend shapes: ("Mouth Upper Overturn"  
"Mouth Lower Overturn"  
"Mouth Upper Up Left"  
"Mouth Upper Up Right"  
"Mouth Lower Down Left"  
"Mouth Lower Down Right")